

## Revision Record

Date	Version	Revision
7/22/2025	1.1.9.1R9	<ol style="list-style-type: none"> <li>Fixed some issues on the production line</li> <li>Fixed several bugs <ol style="list-style-type: none"> <li>Slow response in Jitter application</li> <li>Restart fails with small probability</li> </ol> </li> </ol>
4/3/2025	1.1.9.1R1	<ol style="list-style-type: none"> <li>Supported new AP models: SDS7804AP, SDS7604AP</li> <li>Supported Enhanced Bandwidth on 4GHz and below models (Only applied to units which are produced with 1.1.9.1R1 and later FW)</li> <li>Improved the response speed in the case of deep waveform length</li> <li>Compliance test: <ol style="list-style-type: none"> <li>Added MIPI-DPHY</li> <li>Added 2.5G/5G/10GBASE-T</li> <li>For USB2.0, added Receiver Sensitivity test, and supported upgrading the FW of the fixture by the scope</li> </ol> </li> <li>Math: <ol style="list-style-type: none"> <li>Added operators Tan, Atan</li> <li>Added operator FFTPhase</li> <li>Added new windows Black-Harris and Gaussian for FFT</li> </ol> </li> <li>Decode: added CANXL</li> <li>Optimized refresh speed in the case of Roll + Zoom</li> <li>Eye Diagram: added Second order PLL for Clock Recovery</li> <li>Save/Recall <ol style="list-style-type: none"> <li>Supported to save all segments in sequence mode to one single .mat file</li> <li>Supported to save all channels' data to one file</li> <li>Supported Full Screen view of pictures in File Manager</li> </ol> </li> <li>Supported Wake-on-LAN (Some setting change is necessary. Contact SIGLENT for detailed information)</li> <li>WGEN: supported the case in which built-in and external generators are both in use</li> <li>Fixed several bugs</li> </ol>
12/25/2024	1.1.7.7	<ol style="list-style-type: none"> <li>Supported new model: SDS7604A H12</li> <li>Cursor: new cursor strategy, supporting multi cursors</li> <li>Made Option 16LA Standard</li> <li>Fixed several bugs <ol style="list-style-type: none"> <li>Stuck at splash screen after upgrade</li> </ol> </li> <li>Power off operation at start-up process brings the instrument to dead</li> </ol>
6/4/2024	1.1.5.2	Solved some issue on production line
3/28/2024	1.1.5.1	<ol style="list-style-type: none"> <li>Cursor: Supported more cursors, and more flexible cursor combination</li> <li>Measure: <ol style="list-style-type: none"> <li>Added item UpperLower</li> <li>Supports to zoom in/out Histogram window</li> </ol> </li> </ol>

Date	Version	Revision
		c) Supports two units for Histogram vertical axis: Percent, Count
		3. Fixed several bugs
3/7/2024	1.1.4.2	1. Supported new probes: Siglent's SCP5030, SCP5030A, SCP5150, SCP5500
		2. Measure: Optimized UX of Track and Trend; Supported to export measure data
		3. Fixed several bugs
		a) Slow response after pressing Math button
		b) AWG: SCPI cannot set Load
		c) Some bugs of USB2.0 compliance test
		d) Some bugs of 100Base-TX and 1000Base-T compliance test
		4. Some bugs on Options' unlock
	1.1.2.0	1 <sup>st</sup> release

## Version Compatibility

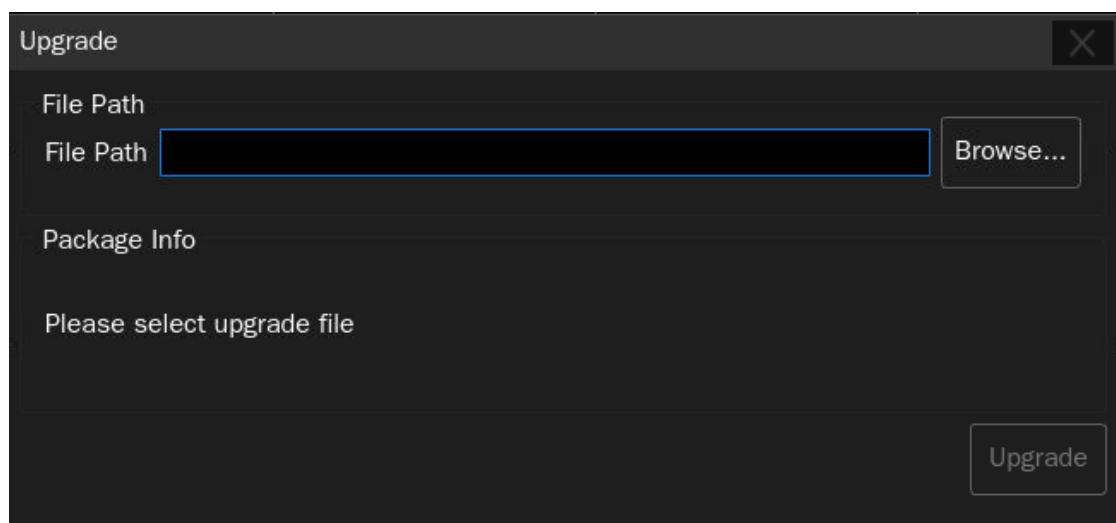
Source Version	Object Version	Compatibility
1.1.2.0	1.1.9.1R9	Tested
1.1.2.0	1.1.9.1R1	Tested
1.1.2.0	1.1.7.7	Tested
1.1.2.0	1.1.5.1	Tested
1.1.2.0	1.1.4.2	Tested

## Upgrade Instructions

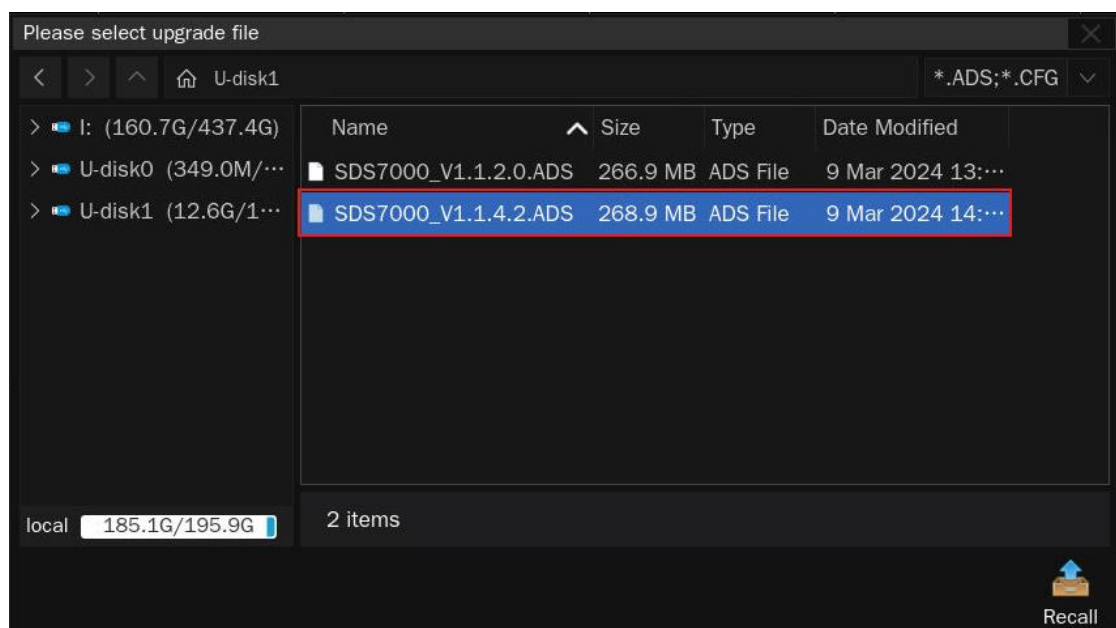
### Upgrade from a U-disk (USB Memory device)

**WARNING: DO NOT shut off the instrument until the update is completed.**

1. Copy the update file (\*.ads) to a FLASH type U-disk, and then insert the U-disk into one of the USB 3.0 host ports of the instrument.
2. Click "**Utility**-> **menu**" on the top menu bar, and then click "**Maintenance** -> **Upgrade**" on the right menu bar. The following the menu should pop up and allow you to select the upgrade file

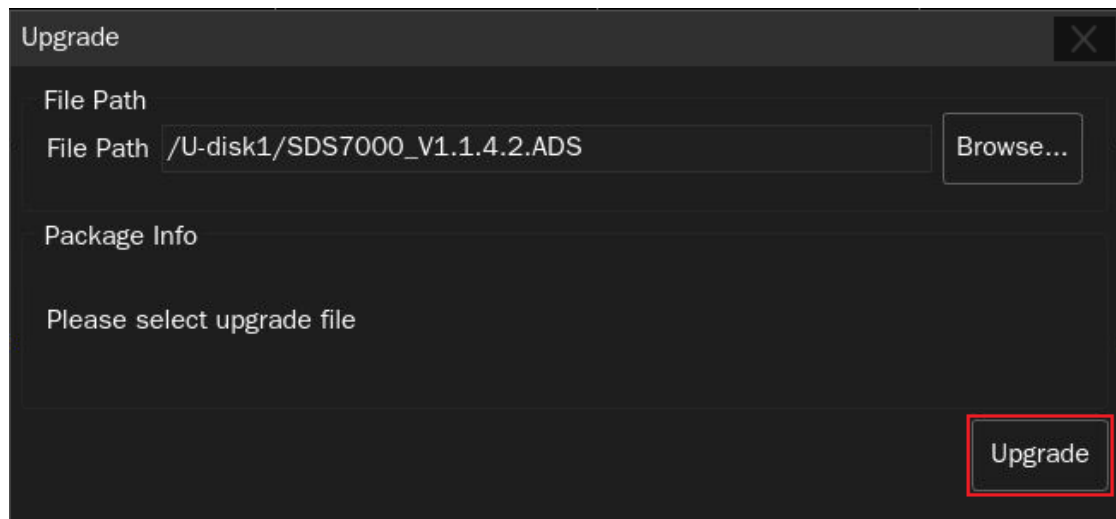


3. Click **Browse** in the menu above, and then select the correct update file (\*.ads) in the pop-up resource manager

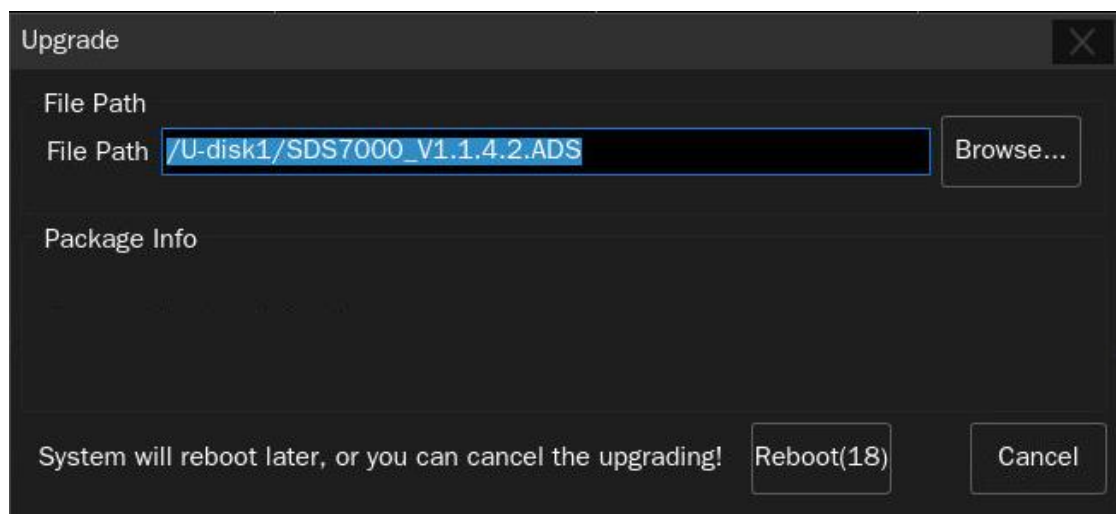


4. Click the recall icon  in the interface above and return to the upgrade dialog.

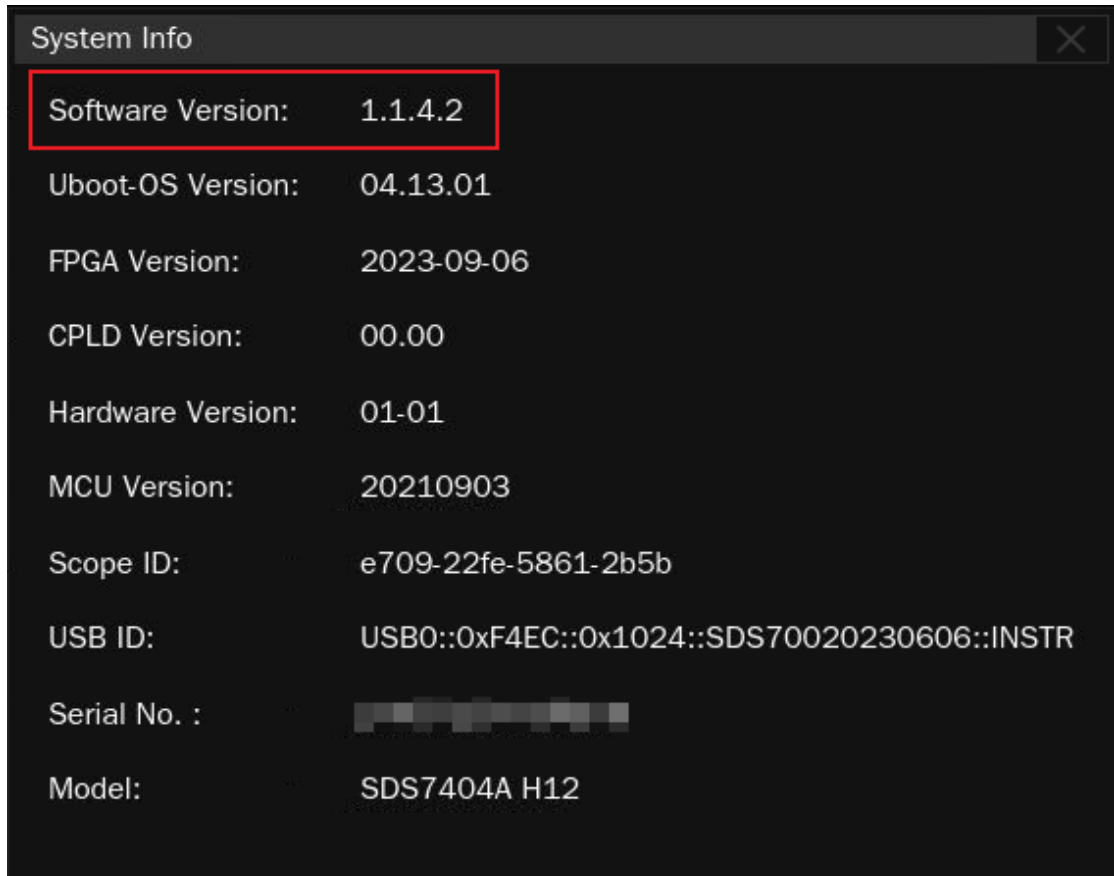
Click **Upgrade** to perform the upgrade operation:



5. The system will first copy and verify the upgrade package. After the upgrade package is validated, the following interface will appear. Click **Reboot** to continue the upgrade, or click **Cancel** to cancel it.



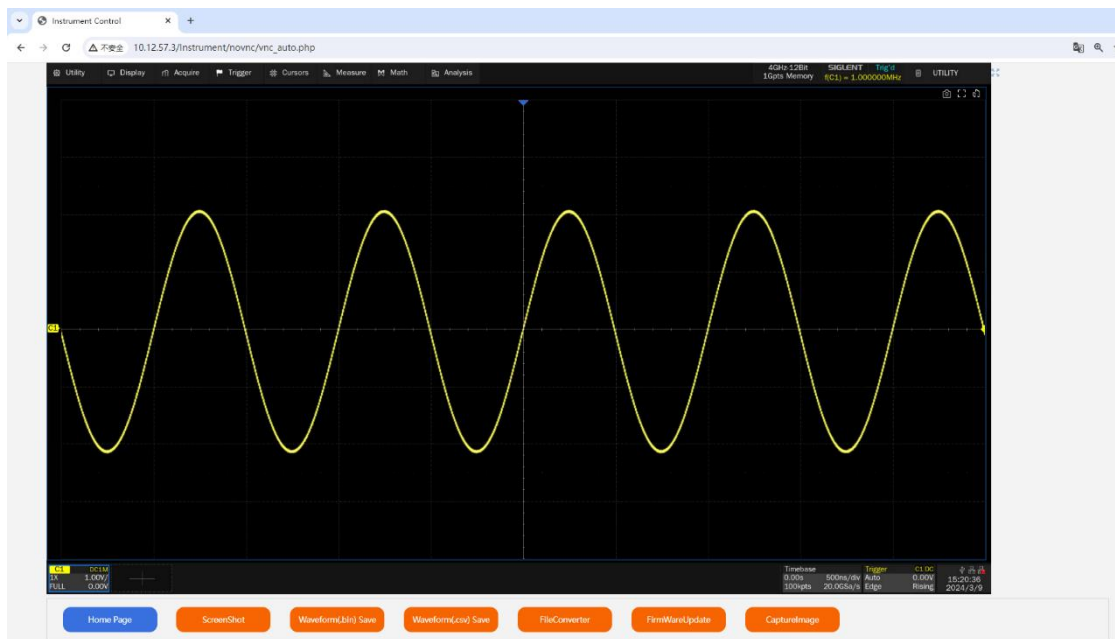
6. After the instrument reboots, check the version number through the **Utility-> menu** -> **System Info** to confirm if the upgrade is successful.



**WARNING: DO NOT shut off the instrument until the update is completed.**

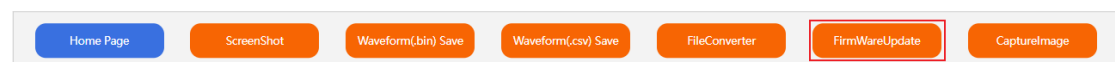
## Upgrade from the Web Server

A built-in web server provides an approach to control the instrument by web browser. This process doesn't require any additional software to be installed on the controlling computer. Set the LAN port correctly (see the User Manual for details), input the IP address of the instrument in the browser address bar, and then the user can browse and control the instrument on the web.



**WARNING: DO NOT shut off the instrument until the update is completed.**

1. Click the "FirmwareUpdate" button in the web interface



2. Select the correct update file (\*.ads) stored on the computer. The instrument will automatically download the update file and perform the upgrade once the file is specified.

**WARNING: DO NOT shut off the instrument until the update is completed.**